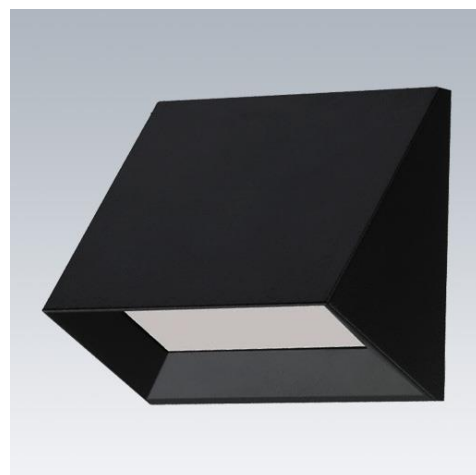


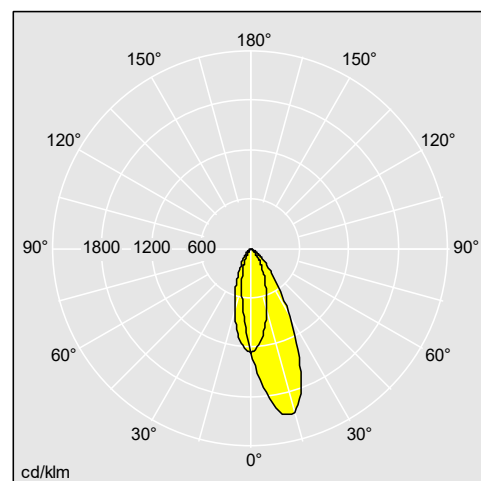
Acuto LED

A contemporary wall mounted architectural LED luminaire for decorative facade lighting with asymmetric light distribution

- IP65 construction for outdoor applications
- Available in 3000K or 4000K, CRI 80, Mac Adam 4
- Bollard post mounting accessory available separately, providing complimentary garden pathway lighting



Photographs, line drawings and photometric data are representative only. For specific product detail please select an individual product.



96652312

Material/Finish

Body: die-cast aluminium (EN AB-47100). Powder coated in textured black (RAL 9005).
 Glass: frosted tempered glass, IK06
 Screws: stainless steel
 Gland: silicone rubber gasket/gland

Installation/Mounting

Acuto LED can be mounted flush on a wall. Supplied with flying lead which requires electrical connection with suitable IP65 connector (not supplied). Can be mounted on the optional bollard post accessory.

Ordering Guide

Description	ILCOS Code	Socket	Wt (kg)	SAP Code
Acuto LED				
ACUTO LED600-830 HF BK	LED		0,75	96652312
ACUTO LED600-840 HF BK	LED		0,75	96652313
ACUTO BOL MPL BK			1,5	96652314
ACUTO BOL MGR BK			1,5	96652315