

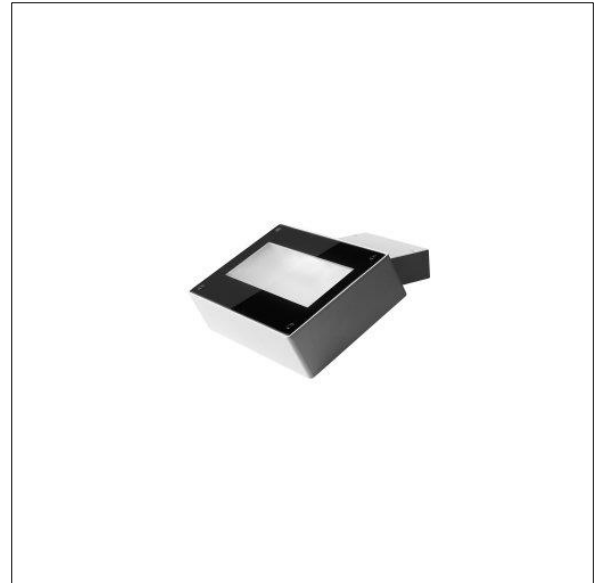
96651804 LUCEM S LED1100-940 HF ADJ BK

ISO 9223 C4	IP65	IK06		
----------------	------	------	---	---

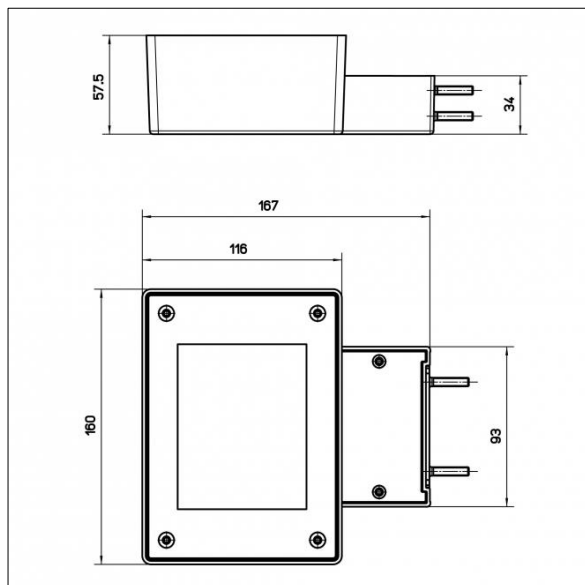
Lucem

An architectural LED wall mounted luminaire with asymmetric light distribution, particularly suitable for indirect lighting applications. Electronic, fixed output control gear. Class I electrical, IP65, IK06. Body: die-cast aluminium (EN AB-47100), powder coated textured black (close to RAL9005). Adjustable tilt angle of the luminaire housing 0° - 60°. Supplied in one box, ready to install. Complete with 4000K LED.

Luminaire input power: 12.4 W
 Luminaire luminous flux: 1145 lm
 Luminaire efficacy: 92 lm/W
 Weight: 2 kg



TLG_LUCEM_F_S_ADJ.jpg



TLG_LUCEM_M_S_ADJ.wmf

All values marked with an * are rated values. Thorn uses tried and tested components from leading suppliers, however there may be isolated instances of technology-related failures of individual LEDs during the rated product lifetime. International standards set the tolerance in initial flux and connected load at ±10%. Unless stated otherwise, the values apply to an ambient temperature of 25°C.

Lucem

96651804 LUCEM S LED1100-940 HF ADJ BK

THORN