

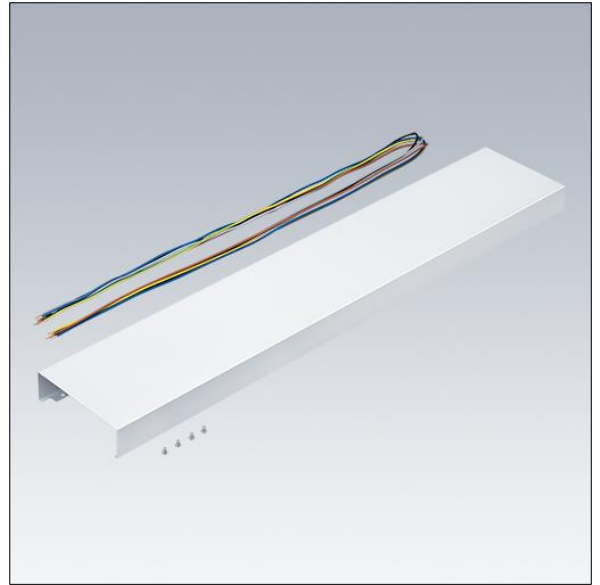
Punch

96635435 PUNCH 3 LRO INFILL L15

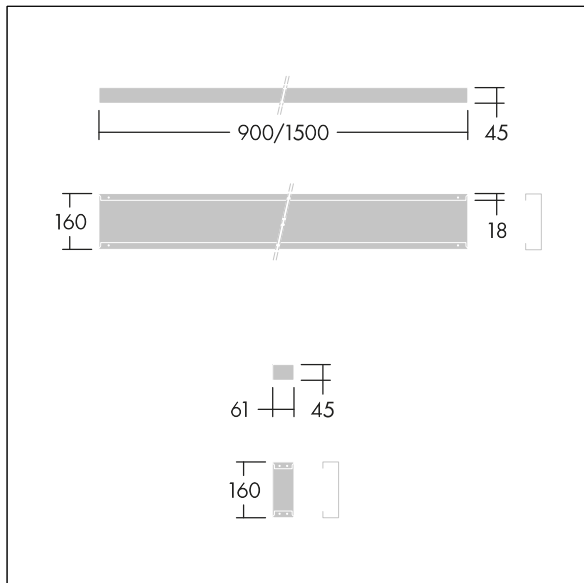
Punch

Infill panel for Punch LRO continuous run installations.
 Body: steel sheet powder coated white (close to RAL9016).
 For electrical through wiring, additional cable for luminaire needed.

Weight: 1.5 kg



TLG_PNCH_F_Infill_1700.jpg



TLG_PNC3_M_PLEXD_INFIL.wmf