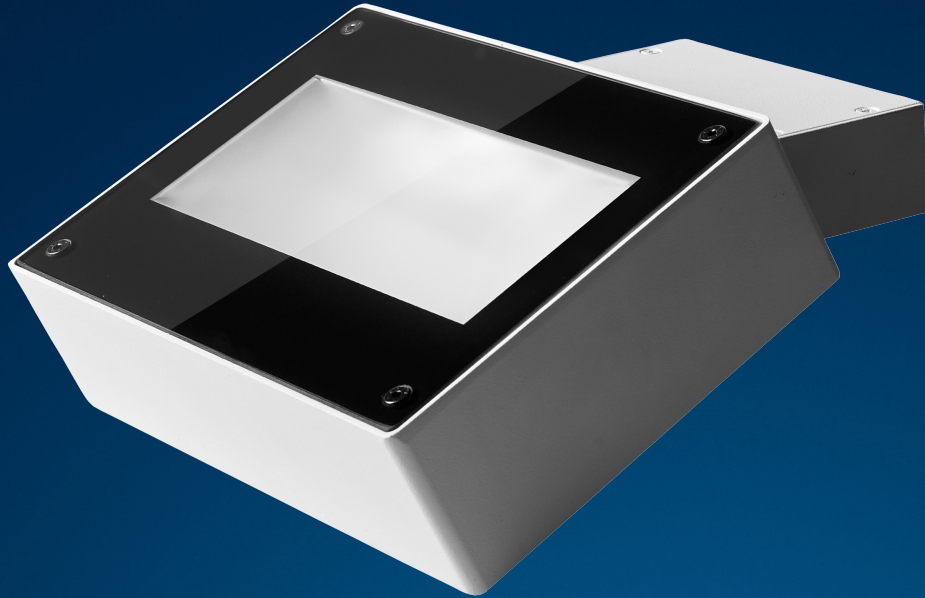


THORN

LIGHTING



LUCEM

COMPACT ARCHITECTURAL LUMINAIRE

The Lucem range of compact mounted asymmetric LED luminaires, are suitable for indirect lighting applications

- Choice of two lumen packages (1100lm & 5000lm)
- Flush wall mounting in versions with fixed or adjustable tilting of the optical housing (0° to 60° from the vertical)
- IP65 housing suitable for both indoor and outdoor applications
- Pure aluminium reflector with PVD finish
- Silicone rubber gaskets and cable glands
- Available in 3000K or 4000K in CRI 90 as standard, MacAdam 3
- Lucem Small is equipped with fixed output driver, Lucem Large is equipped with DALI driver

Materials and Finish

Body: die-cast aluminium (EN AB-47100). Powder coated in textured white (RAL 9010), black (RAL 9005) or anthracite (RAL 7043).

Glass: clear serigraphed tempered glass, IK06

Screws: stainless steel

Installation and Mounting

Lucem can be mounted flush on a wall.

Small Adjustable/Fixed and Large Fixed versions are supplied with flying leads which require electrical connection with suitable IP65 connector (connector not supplied). Lucem Large Adjustable supplied with silicone rubber gaskets and terminal block.



Facade



Residential



Outdoor



INDIRECT WALL LIGHT

LUCEM FIXED	Weight (kg)	Order Number
LUCEM S LED1100-930 HF WH	2.0	96651814
LUCEM S LED1100-940 HF WH	2.0	96651815
LUCEM S LED1100-930 HF BK	2.0	96651816
LUCEM S LED1100-940 HF BK	2.0	96651817
LUCEM L LED5000-930 HFX WH	3.0	96651820
LUCEM L LED5000-940 HFX WH	3.0	96651821
LUCEM L LED5000-930 HFX BK	3.0	96651822
LUCEM L LED5000-940 HFX BK	3.0	96651823

LUCEM ADJUSTABLE	Weight (kg)	Order Number
LUCEM S LED1100-930 HF ADJ WH	2.0	96651801
LUCEM S LED1100-940 HF ADJ WH	2.0	96651802
LUCEM S LED1100-930 HF ADJ BK	2.0	96651803
LUCEM S LED1100-940 HF ADJ BK	2.0	96651804
LUCEM L LED5000-930 HFX ADJ WH	3.5	96651807
LUCEM L LED5000-940 HFX ADJ WH	3.5	96651808
LUCEM L LED5000-930 HFX ADJ BK	3.5	96651809
LUCEM L LED5000-940 HFX ADJ BK	3.5	96651810

IP65

IK06



+61 1300 139 965 | info.au@zumtobelgroup.com
www.thornlighting.com.au