



- 1. Installation and commissioning may only be carried out by authorised specialists and wired in cordance with the latest IEE electrical regulations or the national standards.
- 2. Mains power must be switched off before carrying out installation.
- 3. The manufacturer, shall not be liable for any damage resulting from inappropriate modifications to the luminaire or faulty installation.



- 4. Caution, risk of electric shock.
The control gear provides basic insulation between the LV supply and the control circuit.



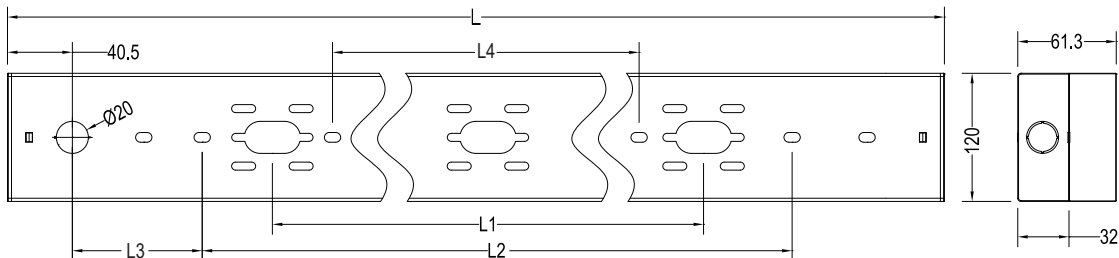
- 5. Luminaires not suitable for covering with thermally insulating material



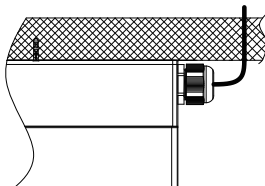
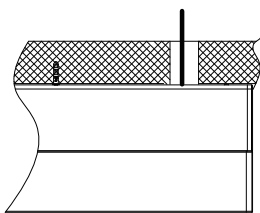
You can help protect the environment!
Please remember to respect the local regulations: hand in non-working electrical equipment to an appropriate waste disposal centre. The packaging material is recyclable. Dispose of the packaging in an environmentally friendly manner and make it available for the recyclable material collection service.

Product Description	SAP Code	Wattage	Current	Voltage	PF	CRI	Ta	CCT
OPTUS 1500 4700-940	96295122	38W	0.3A	220-240V	>0.95	>90	-15~+40°C	4000K
OPTUS 1200 4100-940	96295123	36W	0.3A					

L(mm)	L1(mm)	L2(mm)	L3(mm)	L4(mm)
1200	610	800	159.5	540
1500	610	840	289.5	



Surface mount



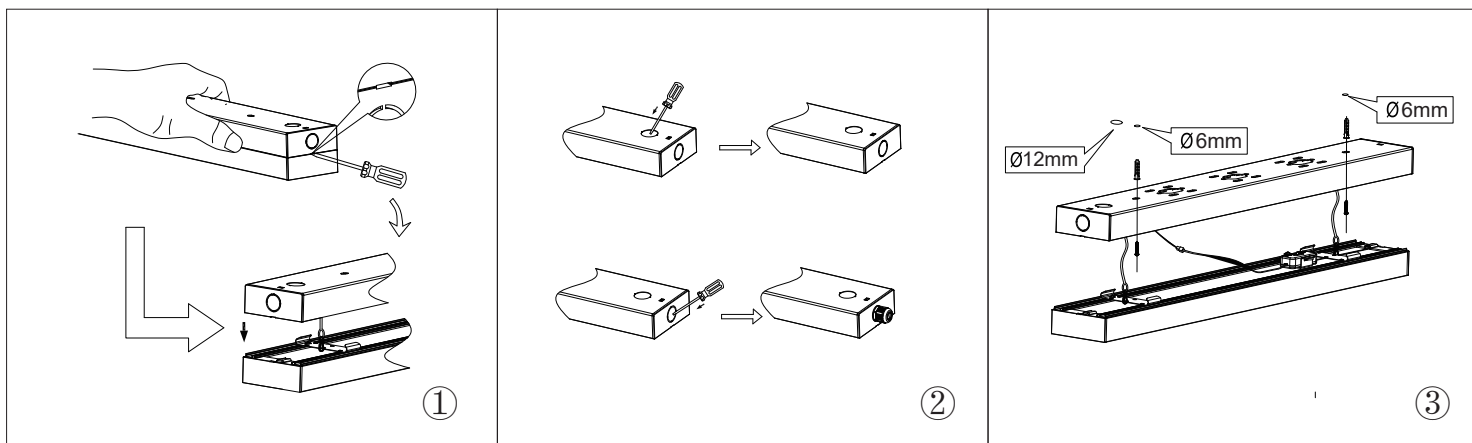
1X2Pcs



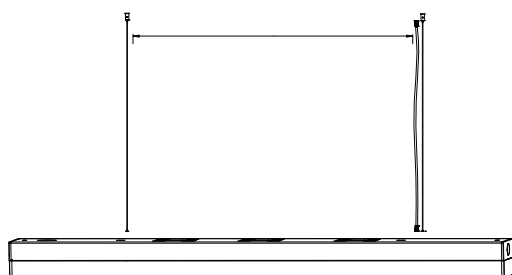
1X2Pcs



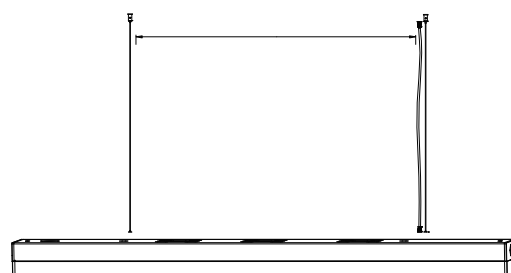
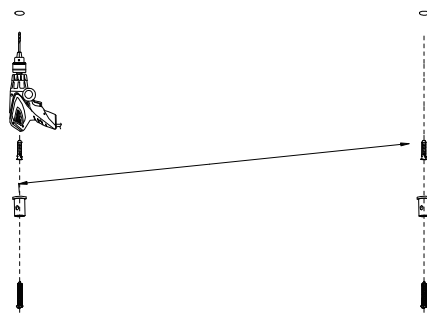
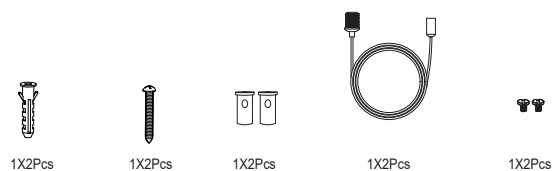
1X1Pcs



Suspension installation



Accessory pack



Wiring

