



- 1. Installation and commissioning may only be carried out by authorised specialists and wired in cordance with the latest IEE electrical regulations or the national standards.
- 2. Mains power must be switched off before carrying out installation.
- 3. The manufacturer, shall not be liable for any damage resulting from inappropriate modifications to the luminaire or faulty installation.



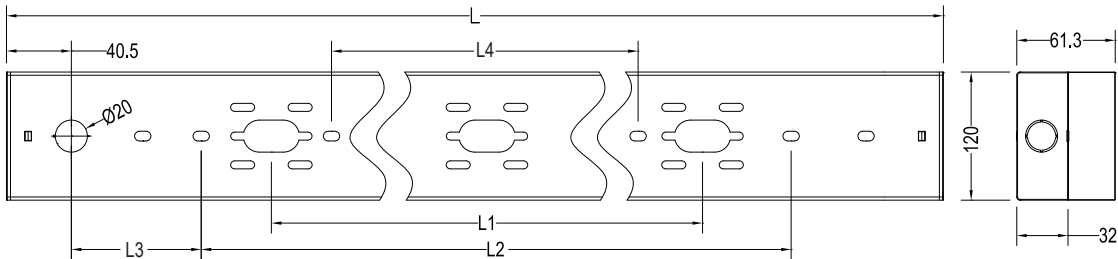
- 4. Caution, risk of electric shock.  
The control gear provides basic insulation between the LV supply and the control circuit.



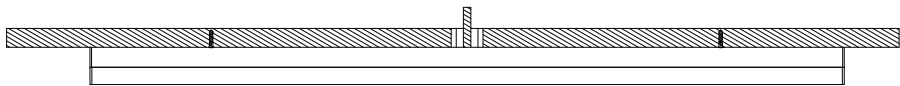
You can help protect the environment!  
Please remember to respect the local regulations: hand in non-working electrical equipment to an appropriate waste disposal centre. The packaging material is recyclable. Dispose of the packaging in an environmentally friendly manner and make it available for the recyclable material collection service.

Product Description	SAP Code	Wattage	Current	Voltage	PF	CRI	Ta	CCT
OPTUS 1500 4700-940	96295122	38W	0.18A	220-240V	>0.95	>90	-15~+40°C	4000K
OPTUS 1500 4700-940 BK	22677041							
OPTUS 1200 4100-940	96295123	36W	0.17A					
OPTUS 1200 4100-940 BK	22677040							

L(mm)	L1(mm)	L2(mm)	L3(mm)	L4(mm)
1200	610	800	159.5	540
1500	610	840	289.5	



Surface mount



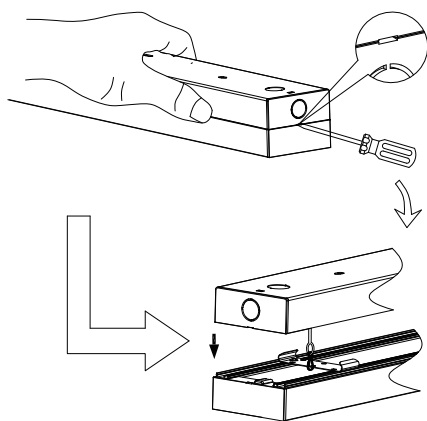
1X2Pcs



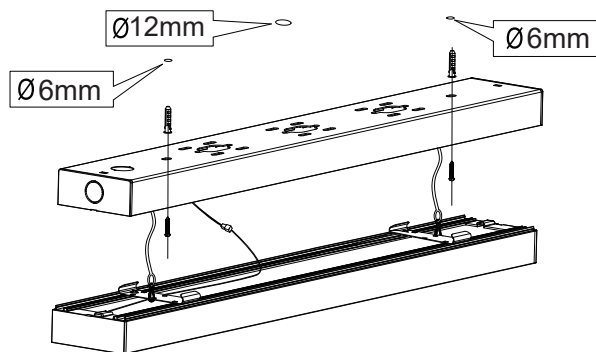
1X2Pcs



1X1Pcs

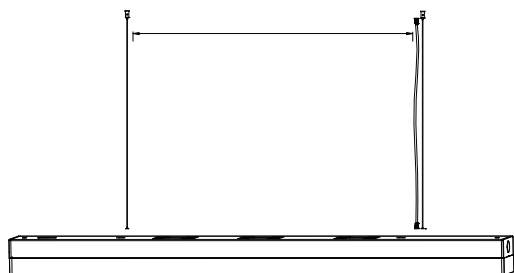


①



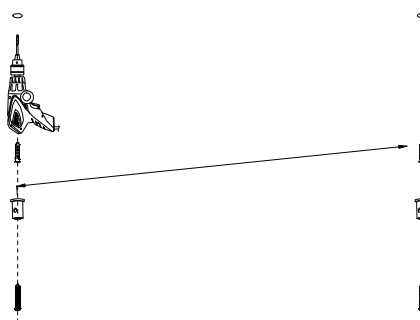
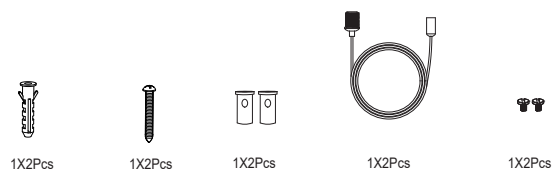
②

### Suspension installation

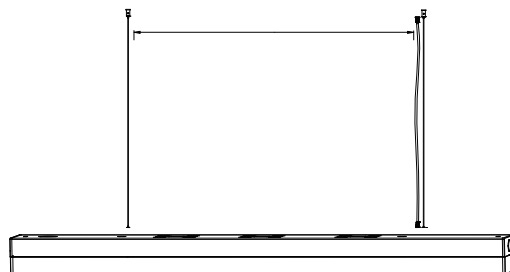


### Accessory pack (ordered separately)

OPTUS WIRE SUSPENSION KIT 1500 - 22676446



①



②

### Wiring

Wattage range(W)		Output current	Driver switch setting	
96295123	96295122		1	2
24W	25W	200mA	-	-
30W	31W	250mA	ON	-
36W	38W	300mA	-	ON



Min. 3x0.75mm  
Max. 3x2.5mm

