

# VOYAGER SURFACE DISK

# THORN

## EN Installation Instructions



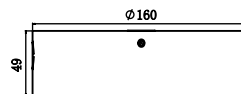
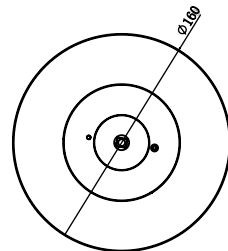
1. Installation to be carried out by a qualified electrician in accordance with local wiring regulations. Ensure that the rated voltage and frequency of the luminaire are compatible with the electrical supply.  
2. Disconnect mains supply before installing, servicing or maintaining the luminaire.



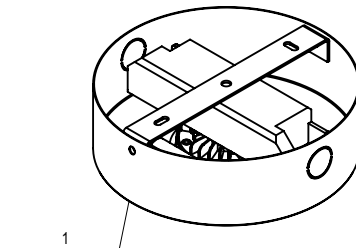
3. The manufacturer, shall not be liable for any damage resulting from inappropriate modifications to the luminaire or faulty installation.  
4. The light source contained in this luminaire shall only be replaced by the manufacturer or their service agent or a similar qualified person.  
5. The light source can't be replaced. The control gear provides basic insulation between the LV supply and the control circuit.  
6. Specification: These luminaires are designed to comply with the requirements of AS/NZS 60598 and AS/NZS 2293.

SAP code	Product Description	EAN
96294578	VOYAGER SURFACE DISK D40 E2NM	9415167080221

Diameter*Height	160*49
Power consumption	3W high charge rate, 0.5W standby
Input Voltage	220-240V AC, 50/60Hz
Battery	Lithium-iron phosphate (LiFePO4)
Charging time	16 hours
Autonomy	3 hours
Temperature	0°C to 40°C
Operating mode	Non-maintained with manual test switch
Spacing classification	C0=D40, C90=D40
Ingress protection	IP20
Material/finish	Powder coated metal housing & polycarbonate
Mounting	Ceiling surface
Warranty	5 years luminaire, 3 years battery

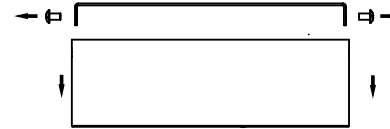


1 x1



**1**

In accordance with the relevant parts of AS/NZS 2293, determine a suitable location for installation, taking care to avoid obstructions.



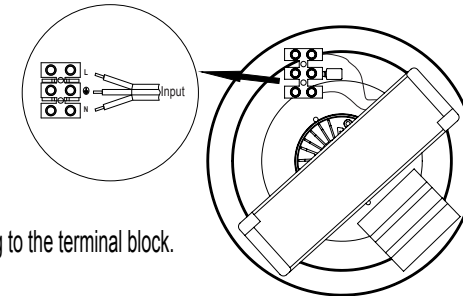
Remove screws to separate the back plate from the fitting.

**2**



Fix the bracket to the ceiling.

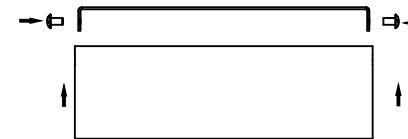
**3**



Connect the wiring to the terminal block.

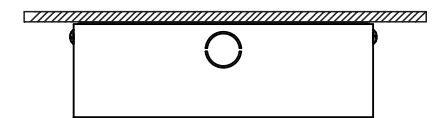
**4**

Re-attached the bracket to the fitting and tighten screws.



**5**

The fitting is installed.



**6**

Test The Luminaire

When the internal batteries have a period of time to charge, the test switch on the side of the luminaire will allow you to spot check correct functionality. The charge indicator illuminates when in operation.

In accordance with the requirements of AS/NZS 2293, once the luminaire is installed and fully charged, you will need to conduct a commissioning discharge test.

The Australian, New Zealand standards require newly installed emergency luminaires to operate in emergency mode for 2 hours.

Subsequent maintenance testing is required every 6 months and testing is required to be recorded in a suitable service logbook.



**IP20 IK07**

