

THORN

STRADALUX LED

Installation instructions

IP54



SAFETY PRECAUTIONS

Please read these instructions carefully before installation. Warranty of this product is subject to installation and maintenance being carried using appropriate conventional practices and/or any specific instructions enclosed within. This product is not for residential use. This luminaire is not intended for looping in.

Important

Disconnect mains supply before installing, servicing or maintaining the luminaire.

The LED light source in this luminaire is not user replaceable. The light source contained in this luminaire shall only be replaced by the manufacturer or their service agent or a similarly qualified person.

1. INSTALLATION

To be carried out by a licensed electrician in accordance with local wiring regulations.

Ensure that the rated voltage and frequency of the luminaire is compatible with the electrical supply. Unless otherwise indicated on labelling, this fitting is suitable for normal ambient temperature conditions of up to 40°C.

Ratings: 220-240V 50-60Hz 0.09A 0.86PF

Luminaire weight: 3kg

2. SPECIFICATION

These luminaires are designed to comply with AS/NZS 60598 and installed in accordance with AS/NZS 3000.

3. CLASSIFICATION FOR PROTECTION

Against electric shock:- Class 1 earthed metalwork. This luminaire must be earthed.

4. CHANGES TO DESIGN

The right is reserved to change the design and/or specification without prior notice or public announcement.

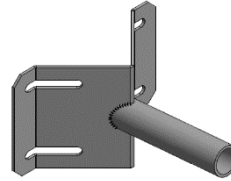
5. WARRANTY

In addition to standard Thorn warranty conditions and in order to maintain protection against electric shock, any LED light source that may be supplied within this luminaire shall only be replaced by Thorn or an approved service agent.

6. INSTALLATION AND USAGE

In accordance with AS3000 install outside arm's reach (&/or a min. of 2.5m from ground level). Luminaire to be normally used horizontal or 5 degrees upcast outdoors on a 34mm nominal overall diameter spigot. For spigot mounting use 10Nm on each bolt. Luminaire can be used indoors but not in a residential application.


This luminaire is not designed for suspension.



Pictured is universal Multi mount accessory, "96028009" (to be ordered separately)

Use 3 core 1mm² circular rubber sheathed cable.

Connect MAINS cable as indicated, i.e.:

L – Active,  - Earth, N – Neutral

This product is fitted with electronic componentry, handle with care. Check contents on opening.

When illuminated, the surface of this product will become hot.

Ensure the product is in good condition before installation.

Dimensions 0.66 x 0.1 x 0.15m giving a maximum projected area of 0.1m² for wind force calculation if used over 8m high.

7. LED CONVERSION KIT

Conversion accessory "Gear tray" 96541925 (ordered separately) will convert existing fluorescent luminaire into LED versions.

This conversion will require 2 off 3.3mm dia. blind holes to be drilled in the housing to enable the supplied safety lanyard to be secured & for earthing continuity to be maintained.



8. STRADALUX Emergency (AS2293)

Conversion accessory "Gear tray" 96647631 will convert existing fluorescent or standard LED luminaires into emergency luminaires.

This conversion will require 2 off 3.3mm dia. blind holes to be drilled in the housing to enable the supplied safety lanyard to be secured & for earthing continuity to be maintained. Drilling through the back and side of the body is also required for the attachment of the battery pack and connecting cable.

Refer to the installation sheet supplied with the item.